

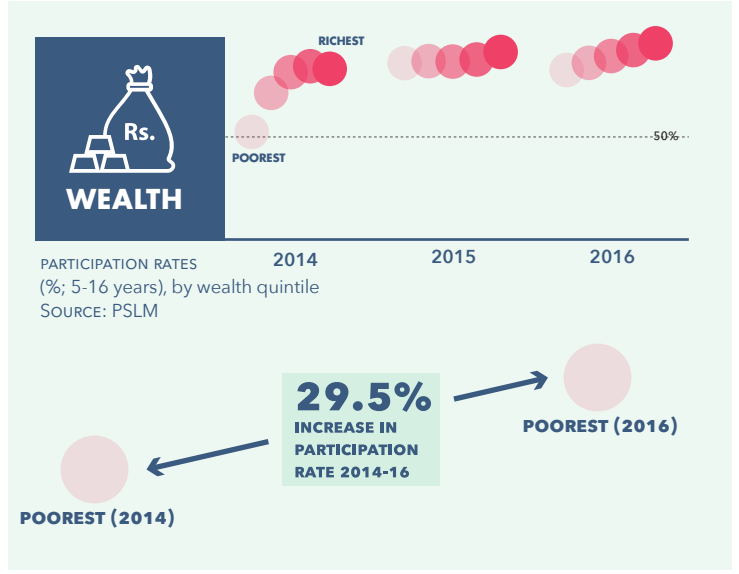
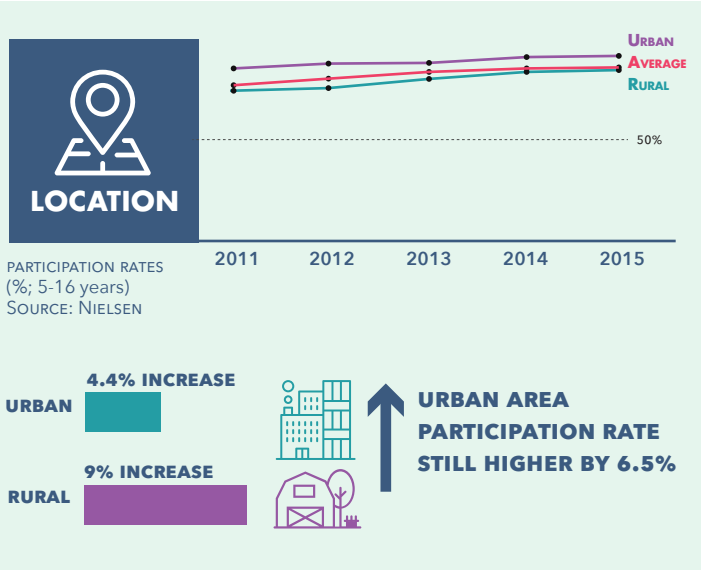
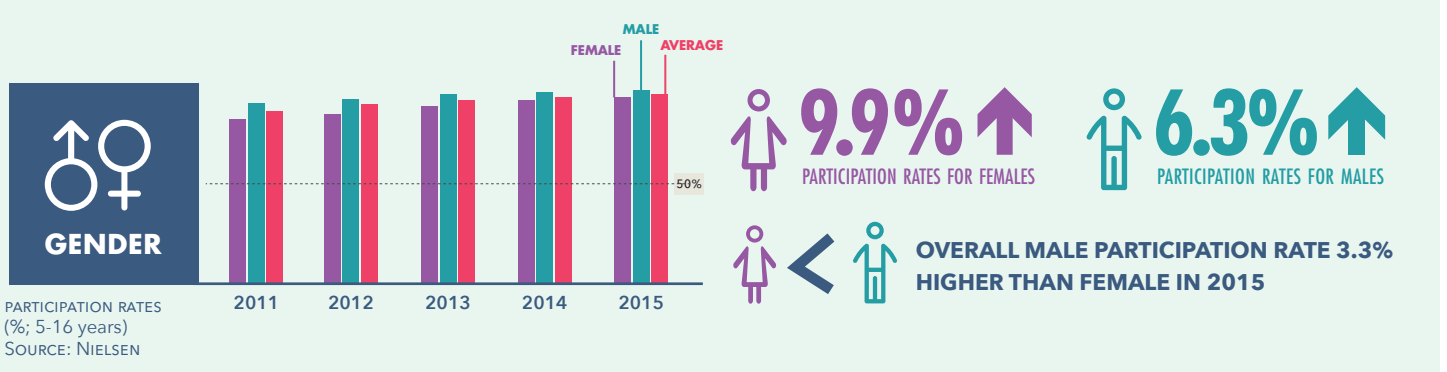
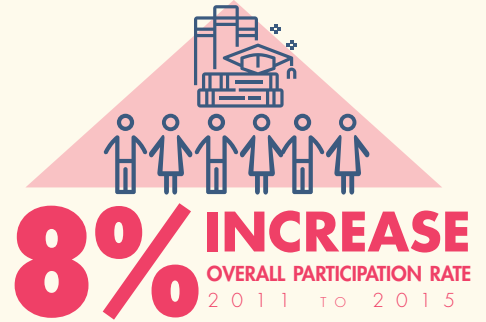
ARE MORE CHILDREN GOING TO SCHOOL IN PUNJAB?

Educational access has improved but inequalities remain by location, by gender, and by wealth

WHAT IS PARTICIPATION RATE?

Children of an age group that are attending school regardless of the grade they are enrolled in.

- Children in rural areas are less likely to be in school than their urban counterparts
- Girls are less likely to participate in schooling than boys
- Children from the richest families are far more likely to be in school than the poorest



Increasingly more children aged 5 to 16 are now in school. However, not always in the age-appropriate grades

DID YOU KNOW?

Difference between NER and GER: Gross enrolment is the percentage of the population that is at school, enrolled in a certain grade regardless of age. It can be more than a 100%. While net enrolment takes into account that children are enrolled in age appropriate grades.

